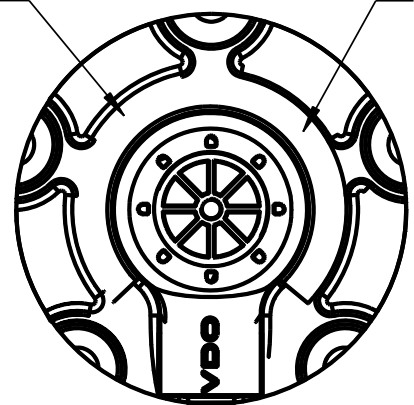
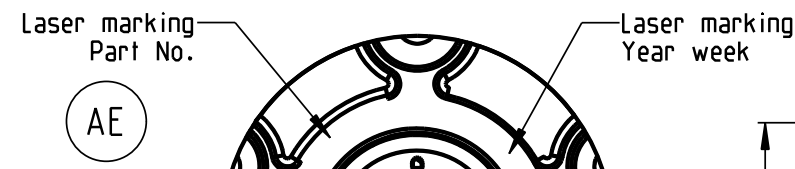
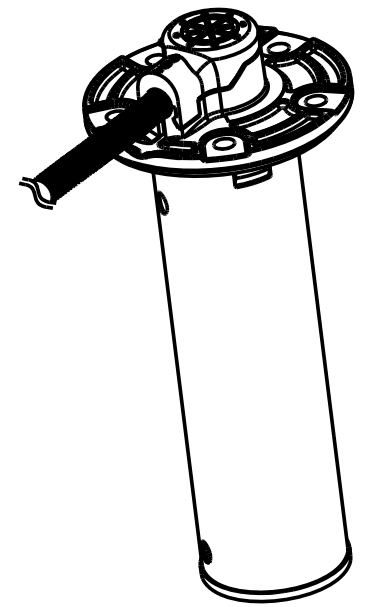
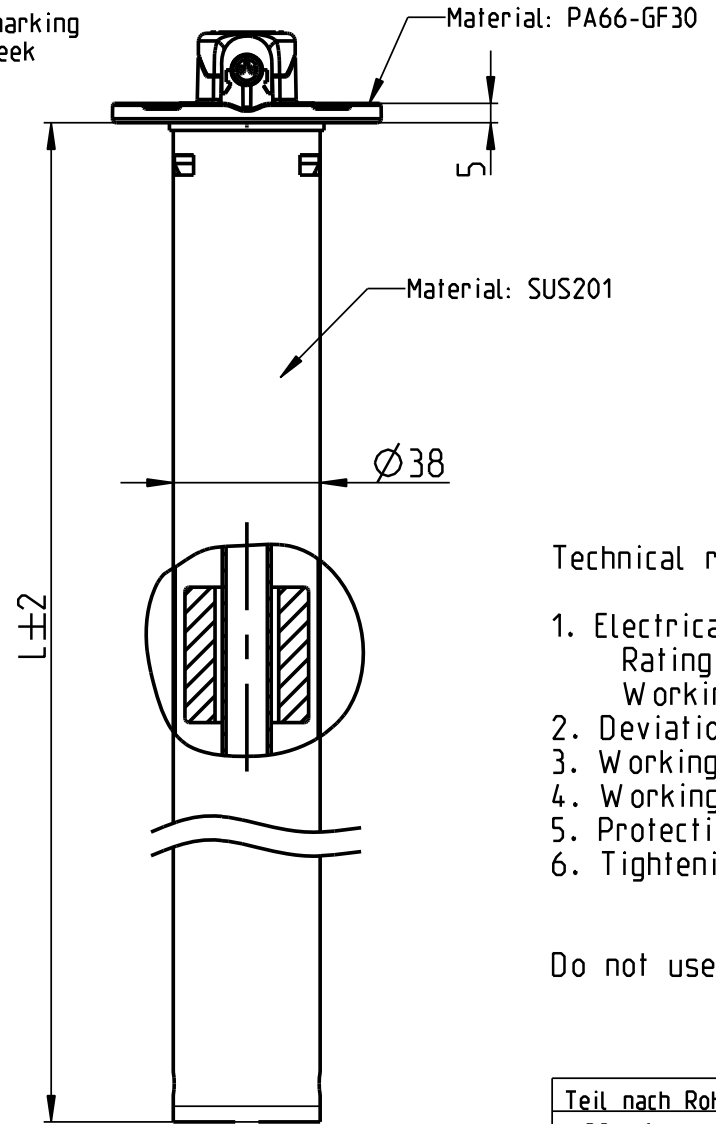


Cust. Part No.	Length	R [Ω]	Reed Switches
A2C 17493000	150 mm	90-4	7
A2C 17493100	160 mm	90-4	
A2C 17493700	170 mm	90-4	
A2C 17499500	180 mm	90-4	8
A2C 17500300	190 mm	90-4	
A2C 17500400	200 mm	90-4	
A2C 17501000	210 mm	90-4	9
A2C 17501200	220 mm	90-4	
A2C 17501300	230 mm	90-4	
A2C 17501700	240 mm	90-4	
A2C 17501900	250 mm	90-4	
A2C 17502000	260 mm	90-4	10
A2C 17502100	270 mm	90-4	
A2C 17502200	280 mm	90-4	11
A2C 17502300	290 mm	90-4	
A2C 17502400	300 mm	90-4	12
A2C 17502500	310 mm	90-4	
A2C 17502600	320 mm	90-4	13
A2C 17502700	330 mm	90-4	
A2C 17502800	340 mm	90-4	14
A2C 17502900	350 mm	90-4	
A2C 17503000	360 mm	90-4	15
A2C 17503100	370 mm	90-4	
A2C 17503200	380 mm	90-4	16
A2C 17503300	390 mm	90-4	
A2C 17503400	400 mm	90-4	17
A2C 17503500	410 mm	90-4	
A2C 17503600	420 mm	90-4	18
A2C 17503800	430 mm	90-4	
A2C 17503900	440 mm	90-4	19
A2C 17504200	450 mm	90-4	
A2C 17504400	460 mm	90-4	20
A2C 17504600	470 mm	90-4	
A2C 17504700	480 mm	90-4	21
A2C 17504900	490 mm	90-4	
A2C 17505000	500 mm	90-4	23
A2C 17505300	550 mm	90-4	
A2C 17505700	600 mm	90-4	26
A2C 17506200	650 mm	90-4	
A2C 17506500	700 mm	90-4	31
A2C 17507300	750 mm	90-4	
A2C 17507400	800 mm	90-4	35
A2C 17507500	850 mm	90-4	
A2C 17507600	900 mm	90-4	40
A2C 17507700	950 mm	90-4	
A2C 17507900	1000 mm	90-4	45
A2C 17508100	1050 mm	90-4	
A2C 17508400	1100 mm	90-4	50
A2C 17508500	1150 mm	90-4	
A2C 17508600	1200 mm	90-4	55



Detail drawing A 2:1

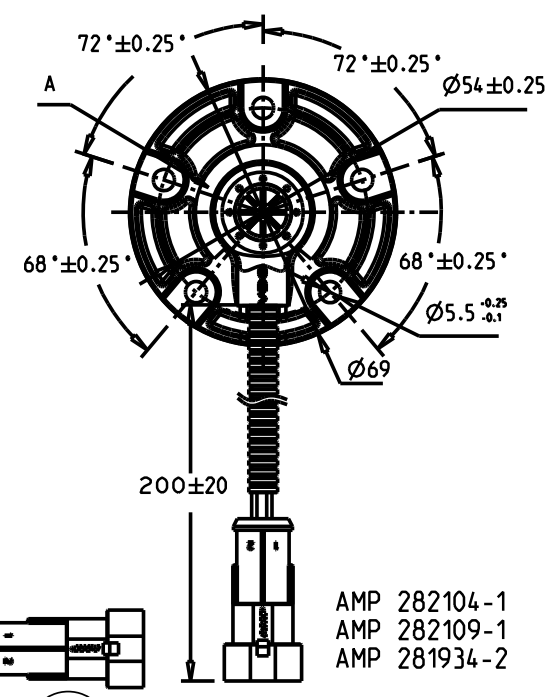
90Ω empty
4Ω full



Technical requirements:

- Electrical characteristics
Rating power: P 125mw
Working current: I max. 300mA
- Deviation of resistance output: $\pm(R \cdot 1.5\% + 1\Omega)$
- Working medium: gasoline, diesel, alcohol
- Working temperature: -40° +85°
- Protection class: IP 65
- Tightening torque for mounting screws 2Nm

Do not use for drink water tanks (AC)



Pin 1 black cable (signal)
Pin 2 blue cable (ground)

AMP 282104-1
AMP 282109-1
AMP 281934-2

mating connector AMP 282080-3
minimum hole diameter for cable management 20mm

Resistance Output tolerance: $\pm R \cdot 1.5\% + 1\Omega$ (AE)

Teil nach RoHS (Elektronik), REACH (Mechanik) / PART ACCORDING TO RoHS (ELECTRONICS), REACH MECHANICS)
 IMDS Anforderungen / IMDS REQUIREMENTS
 -The material information must be registered and maintained in the International Material Data System (IMDS)
 -The IMDS input is the supplier's responsibility and is a requirement for every ISTR.
 -The IMDS sheet ID number has to be declared in the ISTR.
 -Veratron material number has to be mentioned in the field part/item number in IMDS.
 -Drawing number, drawing version, drawing date and part material revision have to be mentioned at recipient data area of IMDS.
 * Freigabe durch veratron AG erforderlich/APPROVAL TO BE OBTAINED FROM veratron AG

Document version	Previous version	Changed items	Change description (including number)
AE	AD	2	Change No CHO-000107 Added reed switches, tolerance resistance output
Surface			General Tolerance ISO 2768-mK
Material			-
Weight		calculated [.] kg	weighed $\pm 5\%$
3D-Model			41182958_CAD_000.ASM
Drawing			41190984_DRW_000.DRW
Scale			1:6
Designed by			Gianluca Lo Sinno @ veratron AG
Released by			Helmut Mohr @ veratron AG
Date			07-Nov-2019
Date			08-Nov-2019
Designation			level sensor
Document key			41190984_DRW_000 AE
Pages			1 of 1

Tolerance for plastic parts CN 58530-1
 Auxiliary dimension DIN 406 - 10
 Theoretical dimension ISO 1101 Part edges ISO 13715
 Unfinished dimension DIN 406 - 10
 Surface quality ISO 1302
 Tolerances Size ISO 14405